



## Shropshire's Approach to the Prevent Duty

2023 - 2026

## 1. Introduction

- 1.1. The UK faces a range of terrorist threats. Currently the most serious is from the Islamic State extremists behind the creation of a modern caliphate; their affiliates; Al-Qa'ida and like-minded organisations. However, terrorists associated with the extreme right also pose a continued threat to our safety and security. All terrorist groups, which seek to radicalise and recruit people to their cause, pose a threat. Whilst the percentage of people who are prepared to actively support violent extremism in the UK is very small, it still poses a threat to our sense of safety, well-being and damages community cohesion.

## 2. The National Prevent Strategy and the Prevent and Channel Duties

- 2.1 The National Prevent Strategy (2011) is part of the Government's Counter Terrorism Strategy called CONTEST. The aim of the Prevent Strategy within CONTEST is to reduce the threat to the UK from terrorism by stopping people becoming terrorists or supporting terrorism. The four elements of CONTEST are:

- **Pursue:** is about detecting and disrupting threats of terrorism. It is targeted at those who have committed or who are planning to commit a crime;
- **Protect:** is concerned with strengthening the country's infrastructure from an attack including reducing the vulnerability of the transport network and improving security for crowded places;
- **Prepare:** focuses on areas of the infrastructure where an attack cannot be stopped and the aim is to reduce the impact of an attack by preparing to respond effectively;
- **Prevent:** is an early intervention process and operates in the "pre-criminal space" It aims to stop people becoming terrorists or supporting terrorism.

The basis of Prevent is simple; it is about keeping our communities safe from extremists. It does not carry a pre-conceived idea of who an extremist is, or their message, but it has to be responsive to the prevailing national and international situation.

- 2.2 The Prevent Duty: Section 26 of the Counter-Terrorism and Security Act 2015 (the Act) places a duty on certain bodies ("specified authorities" listed in Schedule 6 to the Act), in the exercise of their functions, to have "due regard to the need to prevent people from being drawn into terrorism". The duty does not confer new functions on any specified authority. The term "due regard" means that the authorities should place an appropriate amount of weight on the need to prevent people being drawn into terrorism when they

consider all the other factors relevant to how they carry out their usual functions.

Source: <https://www.gov.uk/government/publications/prevent-duty-guidance>

2.3 The Channel Duty: Channel Panel is a multi-agency approach to protect vulnerable people by:

- identifying individuals at risk;
- assessing the nature and extent of that risk; and
- developing the most appropriate support plan for the individuals concerned

The Channel Duty Guidance requires:

- local authorities will have a Channel panel in their area
- the local authority to provide the panel chair and deputy chair
- the panel to develop a support plan for individuals adopted as Channel cases
- where Channel is not appropriate, the panel will consider alternative forms of support, including health care and social care services
- the panel will ensure accurate records are kept detailing the support plan, agreed actions and decision-making, and outcomes
- all partners of a panel (as specified in Schedule 7), as far as is appropriate and reasonably practicable, will cooperate with the police and the panel in the carrying out of their functions
- Monitoring and oversight responsibilities should sit as part of local governance arrangements within the local authority.
- How to raise Prevent concerns or refer individuals for assessment to receive support should be promoted locally by the local authority and partners.

Source: Channel Duty Guidance

### **Other Duties**

3.1 *Equality Act 2010*: The Equality Act 2010 bans discrimination (unfair treatment) in order to achieve equal opportunities in the wider society. The Act brought together and replaced previous equality legislation, such as the Disability Discrimination Act 1995, the Race Relations Act 1976 and the Sex Discrimination Act 1975. It simplified and updated the law and strengthened it. The Equality Act protects people from discrimination because of certain 'protected characteristics' which are:

- age,
- disability,
- gender reassignment,
- marriage and civil partnership,
- pregnancy and maternity,
- race,
- religion or belief,

- sex and
  - sexual orientation.
- 3.2 *Safeguarding*: is the process of protecting vulnerable people, whether from crime, other forms of abuse or (in the context of this document) from being drawn into terrorism-related activity. ‘Safeguarding vulnerable people from radicalisation is no different from safeguarding them from other forms of harm’ (Prevent Strategy – Home Office)
- 3.3 *Teachers Standards*: Schools should promote the fundamental British values of democracy, the rule of law, individual liberty, and mutual respect and tolerance of those with different faiths and beliefs. This can help schools to demonstrate how they are meeting the requirements of section 78 of the Education Act 2002. Actively promoting the values means challenging opinions or behaviours in school that are contrary to fundamental values. The Teachers’ Standards expect teachers to uphold public trust in the profession and maintain high standards of ethics and behaviour, within and outside school.
- 3.4 *Human Rights Act*: This law was passed in 1998. Human rights law requires the State to take steps to protect the right to life which includes measures to prevent terrorism. However, any measures taken to counter terrorism must be proportionate and not undermine democratic values. Included in the Human Rights Act is the protection of an individual’s freedom of thought, religion and belief; an individual’s freedom of speech and peaceful protest; and individual’s right to be treated fairly regardless of their gender, race, sexuality, religion or age.

### 3. Shropshire’s Prevent Aim

**Our aim is to prevent people being drawn into terrorism and to support local communities and institutions to challenge and reject the message of extremism**

- 4.1 Shropshire is judged a low risk area, but it is important not to be complacent. Together we need to promote strong and positive relationships between people from different backgrounds in the workplace, schools and within communities.
- 4.2 The highest risk is from a ‘lone actor’, who is particularly difficult to both detect and identify. In such cases, the internet and social media have proven to be powerful tools for extremists to radicalise individuals. There is a particular concern that vulnerable people may be at risk of radicalisation through the influence of others or via the internet. A proportionate response will need to be developed to mitigate any threat, risk or harm posed to vulnerable adults,

children and communities from extremist groups. This includes recognising 'the Prevent duty' is inextricably linked to other main safeguarding issues such as vulnerability and Hate Crime.

## 5. Our Objectives

5.1 Our objectives are to:

- Embed an understanding of Prevent into the mainstream by standardising training delivery in Shropshire; and
- Ensure the referral process into Channel Panel is well understood by the public and all partners working in the county.

## 6. The Practical Application of Prevent in Shropshire

6.1 **Channel Panel** will be scheduled monthly in accordance with Chanel Duty Guidance and will be chaired by the Statutory Safeguarding Business Partner for Shropshire Council.

6.1.1 Channel Panel will focus purely on the function of Channel panel as outlined in the related guidance.

6.1.2 In the event of there being no cases to discussed, Channel Panel will be cancelled but as a minimum meet on a quarterly basis.

6.1.3 Channel Panel will operate in accordance with its Terms of Reference as agreed by Channel core panel members.

6.1.4 Professionals should send referrals to

[ctu\\_gateway@westmidlands.police.uk](mailto:ctu_gateway@westmidlands.police.uk)

6.1.5 The public should send referrals to <https://actearly.uk/contact/>

6.2 In order to ensure effective links with the **Shropshire Safeguarding Community Partnership** which acts as the Children's and Community Safety Partnerships and Safeguarding Adults Board, the chair of the Channel Panel will be a standing member of the Exploitation Group. Please see appendix 1. For the governance structure of the Partnership.

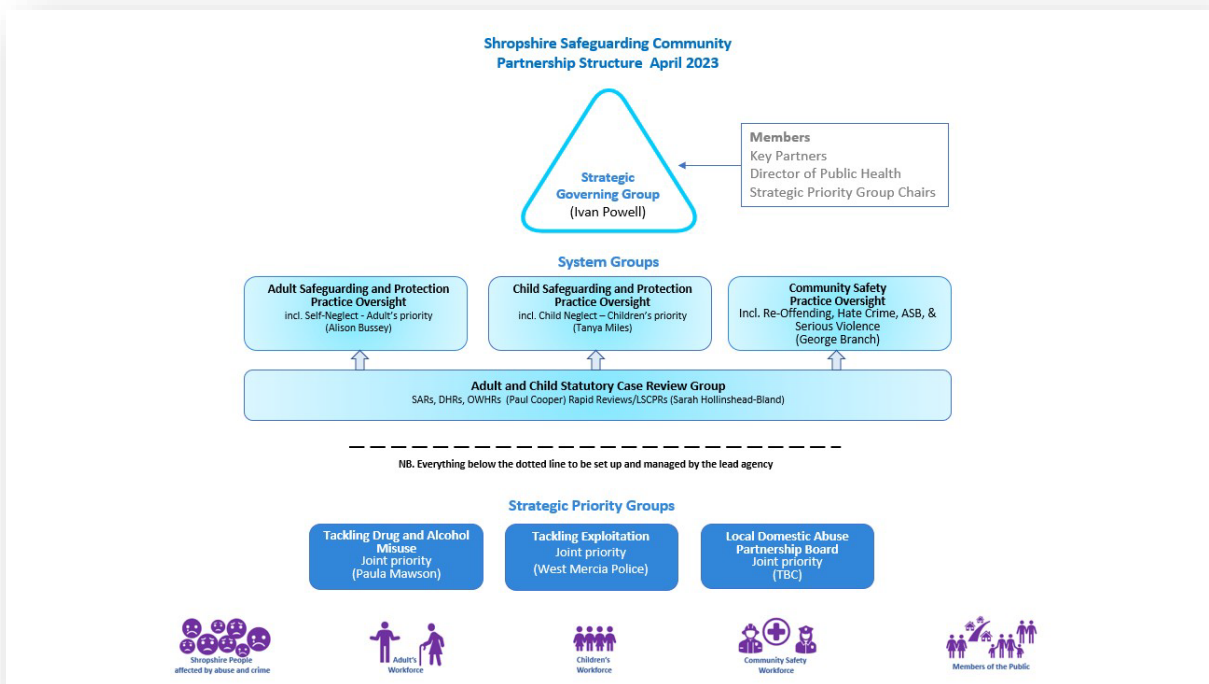
6.2.1 Strategic Governing Group and Exploitation Group members will consider the most recent Counter Terrorism Local Profile for Shropshire and recommend what Prevent specific actions need to be identified as part of the Strategic Action Plan for the Exploitation Group in line with the objectives above.

6.2.2 The chair of the Channel Panel will take these recommendations to the Exploitation group and ensure there is two-way dialogue in place between the operational, case-based Channel Panel and the strategic Exploitation Group of the Partnership.

6.2.3 This document will need to be signed off by the Exploitation Group.

Appendix 1.

## Shropshire Safeguarding Community Partnership Governance Structure



## Definitions

***For the purposes of this document the following definitions have been adopted:***

***Radicalisation*** is defined as the process by which people come to support terrorism and extremism and, in some cases, then participate in terrorist groups.

***Extremism*** is vocal or active opposition to fundamental British values, including democracy, the rule of law, individual liberty and mutual respect and tolerance of different faiths and beliefs.

***Terrorism*** is an action that endangers or causes serious violence to a person/people; causes serious damage to property; or seriously interferes or disrupts an electronic system. The use or threat must be designed to influence the government or to intimidate the public and is made for the purpose of advancing a political, religious or ideological cause.



## **Channel Consent Form**

### **Shropshire Council**

#### **What is Channel?**

Channel is part of the Government's CONTEST Strategy. Prevent is about safeguarding people from being drawn into all forms of terrorism. Channel is a multi-agency meeting that seeks to help individuals and offers support at an early stage if someone is vulnerable to being drawn into terrorism or supporting terrorism. This involves sharing information with other organisations if it is felt they can help in assessing risks and devising plans to reduce the possibility of the person getting involved in support for terrorism.

#### **Key points**

- Channel support is offered to you or the individual named below where there have been concerns about a possible vulnerability to being drawn into radicalisation, terrorism or extremism. The purpose is to safeguard individuals from all forms of radicalisation
- Information about you or the individual that is relevant to Channel and the assessment of risk of radicalisation will be shared via the multi-agency Shropshire Channel Panel. This may include information about you or the person named below that is relevant to the Channel support and assessment. This may include information about family, or others that you know or are involved with. The Home Office Data Privacy Information Notice provides details of how this data is processed. <sup>1</sup>The Data Privacy Information Notice outlines additional information about the processing of your data
- All Channel interventions and support is voluntary and completed with informed consent from the person
- All detail on the nature of the supportive intervention(s) will be made available by Shropshire Channel Panel
- All information is held securely in accordance with the General Data Protection Regulations 2018 and Data Protection Act 2018
- Any sessions with Home Office accredited intervention providers are confidential in nature and a report will be provided to the Shropshire Council Channel Panel Chair and Channel Coordinator to advise on the ongoing risk of radicalisation and what help may be needed. Should a risk of harm be identified this will be disclosed to agencies and you or the individual's parent /guardian/representative

---

<sup>1</sup> <https://www.gov.uk/government/publications/channel-data-privacy-notice/channel-data-privacy-information-notice>

as appropriate. Other specific details will not be routinely shared outside of a general overview, unless you or the individual agrees to sharing

### Consent statement

- I **[NAME]** agree to participate in the Channel process and understand that information gathered will be stored electronically and will be used and shared via the multi-agency Channel Panel for the purpose explained in this form
- I agree to the sharing of information between the agencies involved in with me or the individual via Shropshire Council's Channel Panel, including but not limited to; Adult and Children's Services, West Mercia Police, West Mercia Youth Justice Service, Midland Partnership NHS Foundation Trust, or other NHS services, Shropshire Clinical Commissioning Group and Home Office and Home Office approved intervention providers
- I understand the content of this form, and what I am providing consent for
- I understand that Channel is a voluntary process, and I can withdraw my consent at any time.

### Consent to Channel Support - for people 18 years + (please delete this section if not applicable)

Name	Date of birth	Date consent provided	Signature
<b>Name of officer seeking consent:</b>			
<b>Name of agency:</b>			
<b>Channel point of contact details provided:</b>			
<b>Signature:</b>			
<b>Date:</b>			

**Consent to Channel Support - for parents/carers/guardians consenting on behalf of child or young person or person lacking capacity to consent to support from Channel (please delete this section if not applicable)**

It is recommended that information should be shared appropriately with all people (regardless of age) to encourage their consent and participation in the Channel for improved outcomes. Agreement should be reached with the parent/carer/representative on the most appropriate method of keeping them updated on progress and details of a Channel point of contact provided.

**Consent statement**

- *I agree to the sharing of information between the agencies involved in with the person named via Shropshire Council (Channel Panel), including but not limited to; Shropshire Council departments and partners including Adult and Children’s Services, West Mercia Police, West Mercia Youth Justice Service, Midland Partnership NHS Foundation Trust, or other NHS services and Shropshire Clinical Commissioning Group. Home Office and Home Office approved intervention providers*
- *I understand the content of this form, and the purpose for which I am providing consent*
- *I understand that Channel is a voluntary process, from which I can withdraw consent at any time*
- *I agree to [NAME]’s participation in the Channel process*

Name of Parent/Carer/ Guardian etc. with authority to consent	Date of birth of named person	Date consent provided	Relationship to person receiving support from Channel

**Name of officer seeking consent:**

**Name of agency:**

**Channel point of contact details provided to family:**

**Signature:**

**Date:**

*For further information on Mental Capacity Act, please see guidance [here](#).*



## CHANNEL FEEDBACK FORM

### What is Channel?

Channel provides support to those who may be vulnerable to being drawn into terrorism whoever you are.

The overall aim of Channel is to help you as early as possible and divert you away from the risks you may face.

### What kind of support is provided through Channel?

Examples of support include:

- mentoring
- diversionary activities such as sport, health or mental health support
- mainstream services such as education, employment or housing

Support is tailored to your specific needs.

### What do you think of Channel?

It is important for us to understand if the support you have received through Channel has helped you. We would also like to know if we can improve what we do.

The use of this form will be agreed on an individual basis and it will be used when you are no longer receiving support via the Channel meetings.

Your reference number (this will be supplied by your case officer)	Click or tap here to enter text.
Your name	Click or tap here to enter text.
Are you responding on behalf of someone else who has been part of Channel e.g. a parent/ family or carer? (please delete)	Yes / No

If you've answered yes to the above, please tell us your relationship to the person being supported through Channel	Click or tap here to enter text.

### **The help or information you received before entering Channel**

When you were referred to the Prevent Team and Channel, did you fully understand why and how we might be able to help you?

Click or tap here to enter text.

### **The help or support you received as part of Channel**

Did you feel like you had a say or could share your thoughts with your case officer or 'intervention provider', about being part of the Channel process?

Click or tap here to enter text.

What was good about being part of Channel?

Click or tap here to enter text.

From accessing services, support and intervention from Channel, how has this affected your attitudes, values and behaviours? How have you applied what you have learned to your life?

Click or tap here to enter text.

What could have been done better? Is there anything we should change to make it work better for others?

Click or tap here to enter text.

Is there anything you'd like to say about a particular team or agency?

Click or tap here to enter text.

What difference did it make for you (and for others – friends and/or family)?

Click or tap here to enter text.

**Have we helped you with any of the following? (You can tick as many as you like)**

<input type="checkbox"/> 	How I feel generally	<input type="checkbox"/> 	Practical help with my property or business
<input type="checkbox"/> 	My physical and mental health	<input type="checkbox"/> 	Coping with a bereavement
<input type="checkbox"/> 	Finance and debt problems	<input type="checkbox"/> 	Employment and training advice
<input type="checkbox"/> 	Substance use issues	<input type="checkbox"/> 	Listening to me
<input type="checkbox"/> 	Understanding the potential crime	<input type="checkbox"/> 	Alcohol use issues

 <input type="checkbox"/>	Feeling less isolated		 <input type="checkbox"/>	Giving me information about other services
 <input type="checkbox"/>	Housing advice		 <input type="checkbox"/>	Channel has not helped me
 <input type="checkbox"/>	Support for my family		 <input type="checkbox"/>	Something else (please tell us below)
 <input type="checkbox"/>	Making me feel safer		Click or tap here to enter text.	

**And finally:**

We might wish to contact you to understand more details about your experience in Channel. Do you consent to a member of Prevent contacting you further?

Yes

No

Thank you for filling this survey in. Your information will help is improve what we do. It will also be treated confidentially and will only be viewed by the Prevent team and Channel Panel members. When producing statistics, records are accessed by reference number rather than by name to safeguard privacy.

If you have any further questions about the form or need any advice please ask your case officer.

You can give it to your case officer or send it by email to:

[sscpbusinessunit@shropshire.gov.uk](mailto:sscpbusinessunit@shropshire.gov.uk)



## West Mercia CTLP 2023 - RESPONSE TO CONSIDERATIONS

The Exploitation Group having assessed and reviewed the CTLP and the findings of the Prevent Benchmark assessment, the group has identified the following as it Key Prevent Priorities for 2023-24

- Develop awareness with staff and communities relating to ERWT- Increasing levels of activism and referrals
- Increasing awareness with staff and communities to the online threat for both ERWT and ISL
- Developing awareness to services/staff that support/work with young people, especially males, as they face greater risks to being drawn into terrorism
- Developing awareness of risks to services/staff supporting cohorts of the community at greater risk of exploitation, such individuals with mental health issues.
- Gain appropriate assurance that there is awareness of the referral pathway across the partnership and assurance it is embedded into existing safeguarding/reporting pathways
- Develop a robust and proportionate confidence survey, especially with regard to training of staff and staff awareness.
- Track, monitor and respond to any emerging issues that may relate to identified geographical or ideological issues.

REF	RECOMMENDATION
PR 1	<p>How can local authorities raise awareness of the early signs that an individual is on the pathway to potential radicalisation? How confident are partners in understanding the implications of not reporting at the earliest opportunity and their process in managing the risk if not reported? (ERWT and ISL)</p> <p><b>Action (for Exploitation Group Business Plan): The creation and circulation of the Raising Awareness Booklet regarding the ERWT and the Student Health Safety Guide needs to be promoted and the impact tracked by the Exploitation Group</b></p> <p><b>Action (for Exploitation Group Business Plan): The Exploitation Group needs to seek appropriate confidence via their Prevent Confidence Survey with key partners and then review the returns to identify if there are any concerns identified regarding the referral pathway and training.</b></p>
PR 2	<p>How confident are partners that threat and risks from the online space are being reported at the early stages of identification? How can we monitor internet activity and ensure that concerns are raised at the earliest possible opportunity? (ERWT and ISL)</p> <p><b>Action (for Exploitation Group Business Plan): Please see PR 1 and Confidence Survey includes IT Policies</b></p>

PR 3	<p>How can local authorities engage with their vulnerable communities to promote integration and reduce community tensions? How can communities be encouraged to report any concerns regarding activities or individuals of concern? (ISL)</p> <p><b>Action (for Exploitation Group Agenda):</b> The Exploitation Group should review the opportunity to promote Prevent with local communities by integrating Prevent messaging into other upcoming relevant engagement opportunities at every meeting (Standing Agenda Item).</p>
PR4	<p>Consider how communities/ businesses can be vulnerable to both targeted attacks and radicalisation due to their religious/social/political identity? (ISL)</p> <p>The Exploitation Group has representation from 3<sup>rd</sup> Sector organisations and the group needs to support these organisations in developing their understanding of the local Prevent issues and encourage them to report any relevant information or intelligence regarding such issues. The Exploitation Group make wish to seek assurances from the local operational Multiagency group that will feed back to the Group if any relevant incidents or issues occur and may have any potential Prevent implications.</p> <p><b>Action (for Exploitation Group Agenda):</b> Standing Agenda Item for Group to encourage updates from 3<sup>rd</sup> Sector representatives and opportunity to provide relevant updates for these representatives on current/emerging concerns.</p>
PR 5	<p>How confident are partners in recognising current/emerging crisis narratives and understanding the potential negative impact the narratives could have if displayed as propaganda within their local authority or online? How could these narratives be countered? (ISL)</p> <p>The Exploitation Group has representation from 3<sup>rd</sup> Sector and other relevant organisations and the group needs to support these organisations in developing their understanding of the local Prevent issues and encourage them to report any relevant information or intelligence regarding emerging narratives.</p> <p><b>Action (for Exploitation Group Agenda):</b> Standing Agenda Item for Group to encourage updates from 3<sup>rd</sup> Sector representatives and opportunity to provide relevant updates for these representatives on current/emerging concerns.</p>
PR 6	<p>How can partners enable staff to identify and report individuals who engage with other agencies (such as housing, job centre) that require mental health support? (ISL)</p> <p><b>Action (for Exploitation Group Business Plan):</b> The creation and circulation of the Raising Awareness Booklet regarding the ERWT and the Student Health Safety Guide needs to be promoted with relevant partners and the impact tracked by the Exploitation Group. The Group may wish to review and identify particular service providers that could support such individuals and seek assurances that front line are appropriately Prevent trained.</p>

	<b>Action: Please see PR 1.</b>
PR7	<p>What can police and partners do to ensure public facing staff can identify and correctly report stickering, graffiti and similar which might be of concern to CT policing? (ERWT)</p> <p><b>Action (for Exploitation Group Business Plan):</b> The Exploitation Group should encourage the creation of a simple local reporting pathway, so that staff can report such incidents and submit, if available photographs to local CT police. This pathway should be circulated across relevant agencies. The issue can be tracked by the standing agenda item at each meeting for Problem Solving to identify and track any such reporting.</p>
PR8	<p>How can partners raise awareness of the risk linked to the use of unregulated social platforms? (ERWT)</p> <p>We are not confident this is the case.</p> <p><b>Action: Please see PR 1 regarding Awareness Raising Booklet and Student Health Safety, as well as seeking confidence about IT policies via the Confidence Survey.</b></p>
PR9	<p>How can partners ensure that extreme rhetoric and hateful content is reduced and mitigated in the physical space, and that targeted out-groups report concerns? (ERWT)</p> <p>This can be incorporated into other relevant actions</p> <p><b>Action: See PR 5 and PR7 .</b></p>
PR 10	<p>How can partners raise awareness of current and emerging crisis narratives and make efforts to counter such narratives within the community? (ERWT)</p> <p>This can be incorporated into other relevant actions</p> <p><b>Action: See PR 5 and PR7</b></p>
PR11	<p>How can partners raise awareness of the signs of radicalisation? ERWT)</p> <p>This can be incorporated into other relevant actions</p> <p><b>Action: See PR 1</b></p>
PR 12	<p>How confident are partners that individuals would be offered the necessary help to reduce the risk of radicalisation? (ERWT)</p> <p><b>Action (for Exploitation Group Agenda):</b> Standing Agenda Item for Group to oversee the Channel Panel, will allow the group to seek appropriate assurances that the Channel Panel is providing appropriate support for individuals receiving its support</p>
L 1	<p>Consider how communities/ businesses can be vulnerable to both targeted attacks and radicalisation due to their religious/social/political identity? (LASIT)</p>

	<p>The Exploitation Group make wish to seek assurances from the local operational Multiagency group that will feed back to the Group if any relevant incidents or issues occur and may have any potential Prevent implications.</p> <p><b>Action: See PR 4</b></p>
PV1	<p>Partners to prioritise awareness activity around young people and the online space.</p> <p>The creation and publication of the Awareness Raising Booklet and the Student Health Safety Guide will support this issue.</p> <p><b>Action: See PR 1</b></p>
PV 2	<p>Partners are encouraged to horizon scan to identify potentially dangerous or radicalising influences for young people.</p> <p><b>Action (for Exploitation Group Agenda): Standing Agenda Item for Partner updates can be used to encourage key partner agencies to report any emerging concerns or issues regarding emerging narratives or influencers.</b></p>
PV 3	<p>Partners to assure themselves that policies, processes and practices are able to effectively identify those vulnerable to radicalisation.</p> <p>The Prevent Confidence Survey will provide the Exploitation Group the means to gain appropriate assurances from partners regarding the Prevent Referral Pathway and Training.</p> <p><b>Action: See Action PR 1</b></p>
PV 4	<p>Although there is no causal link between mental health and terrorism, there is an increasing number of people who suffer from mental health conditions referred to Prevent.</p> <p>The Prevent Confidence Survey will provide the Exploitation Group the means to gain appropriate assurances from partners regarding the Prevent Referral Pathway and Training. Sectors that support people with mental health issues should be encouraged to ensure staff engaged with individuals are appropriately Prevent trained, this may include 3<sup>rd</sup> Sector organisations, sexual health and addiction services.</p> <p><b>Action: See Action PR 1</b></p>
PV 5	<p>Better understand and capture the primary radicalising influences/trigger events that motivated an individual's beliefs or behaviours</p>

	<p><b>Action (for Exploitation Group Business Agenda):</b> Exploitation Group receives feedback from the Channel Panel chair regarding key issues identified from current/recent cases and from CT policing regarding referrals. The Group needs to review such updates and, if necessary, having identified any such signs or triggers ensure that information is included any relevant updates for front line staff.</p>
--	--