

Shropshire Safeguarding Community Partnership

Strategic Plan and Priorities

2023 – 2026



Status	Approved
Date of Approval	14.03.24
Review Date	February 2026
Approving Body/Group	Shropshire Safeguarding Community Partnership

CONTENTS

Foreword from the Independent Chair	3
What is the Shropshire Safeguarding Community Partnership?	4
Local Strategy	4
The Vision for Shropshire	5
Background	5
Statutory Duties of the Partnership	6
Our Business as Usual Activity	7
Our Strategic Priorities	7-12
Appendix 1. Shropshire Safeguarding Community Partnership Structure	14
Appendix 2. Shropshire Safeguarding Community Partnership Business Plan Template	15-16

Foreword from the Independent Chair

Thank you for your interest in wanting to understand the detail of our strategic plan and priorities to promote the welfare of children, safeguard adults who are at risk of abuse and to keep our communities safe across Shropshire. It is our ambition to empower and work with individuals and communities to jointly achieve the plan.

In responding to change, the safeguarding partners along with local agencies and organisations are committed to the transformational journey to improve local safeguarding arrangements and outcomes for children, adults and communities.

We will work together in a system where:

- the views and experiences of children, young people, families and adults are at the centre of all we do
- excellent practice is what we deliver
- partner agencies hold one another to account effectively
- ‘new’ safeguarding issues are identified early
- learning is promoted and embedded
- information is shared effectively
- the public feel confident that Shropshire citizens are protected from harm



This multi-agency, integrated, safeguarding and community safety partnership reflects Shropshire’s ambition to work collaboratively across local agencies and organisations and with individuals and communities to develop an equitable and robust partnership. This strategy builds on the work we started between April 2020 and March 2023.

Ivan Powell
Independent Chair and Scrutineer

What is Shropshire Safeguarding Community Partnership (hereafter referred to as the Partnership)?

Shropshire Safeguarding Community Partnership is a range of partners coming together to tackle child and adult abuse and community safety in Shropshire in a single governance structure. Providing the foundation for the partnership are:

- our children and young people and their families affected by abuse and crime,
- adults and families affected by abuse and crime
- staff and volunteers working across social care, health and the criminal justice system.

The partnership structure can be found at appendix 1.

The Strategic Priority and Systems Groups meet regularly throughout the year and are formed based on identified local safeguarding and community safety needs. These needs were identified at a planning and priority setting day on 3rd February 2023. Information considered on the day includes:

- Integrated Care Board's strategic priorities
- Health and Well-Being Board's priorities
- Shropshire Integrated Place Partnership' priorities
- West Mercia Youth Justice Management Board's priorities
- Crime Reduction Board's priorities

The Strategic Governing Group of Shropshire Safeguarding Community Partnership, with the scrutiny of the Independent Chair, brings together the senior representatives from each of the organisations required to engage in adult and children's safeguarding and community safety. required by legislation above. We refer to those agencies as Key Partners. You can find the constitution [here](#).

The Shropshire Safeguarding Community Partnership acts to seek assurance, scrutinise, challenge and ensure agencies are enabled to work together to achieve the vision of the Partnership. The partnership fulfils the statutory functions of the:

- Community Safety Partnership
- Children's Safeguarding Partnership
- Safeguarding Adults Board

Our Community Safety statutory duties are to:

- To formulate and implement:
 - a strategy for the reduction of crime and disorder in the area (including anti-social and other behaviour adversely affecting the local environment)

- a strategy for combatting the misuse of drugs, alcohol and other substances in the area
- a strategy for the reduction of re-offending in the area
- To have regard to the police and crime objectives set out in the Police and Crime Plan
- To undertake Domestic Homicide Reviews
- Produce an annual strategic assessment
- Work to The Crime and Disorder (Formulation and Implementation of Strategy) Regulations 2007 to share data
- Undertake Anti-Social Behaviour Case Reviews
- Report at least once a year to a crime and disorder committee
- To undertake Offensive Weapons Homicide Reviews (when in force)
- Specified authorities are required to work together to prevent and reduce serious violence
- Produce a Strategic Needs Assessment about Serious Violence

The statutory duties of the Children's Partnership are to:

- Publish arrangements for agencies to work together to explain how they are safeguarding and promoting the welfare of children
- Set out arrangements for scrutiny by an independent person
- Publish an annual report
- Conduct Local Child Safeguarding Practice Reviews

Our Safeguarding Adult Board statutory duties are to:

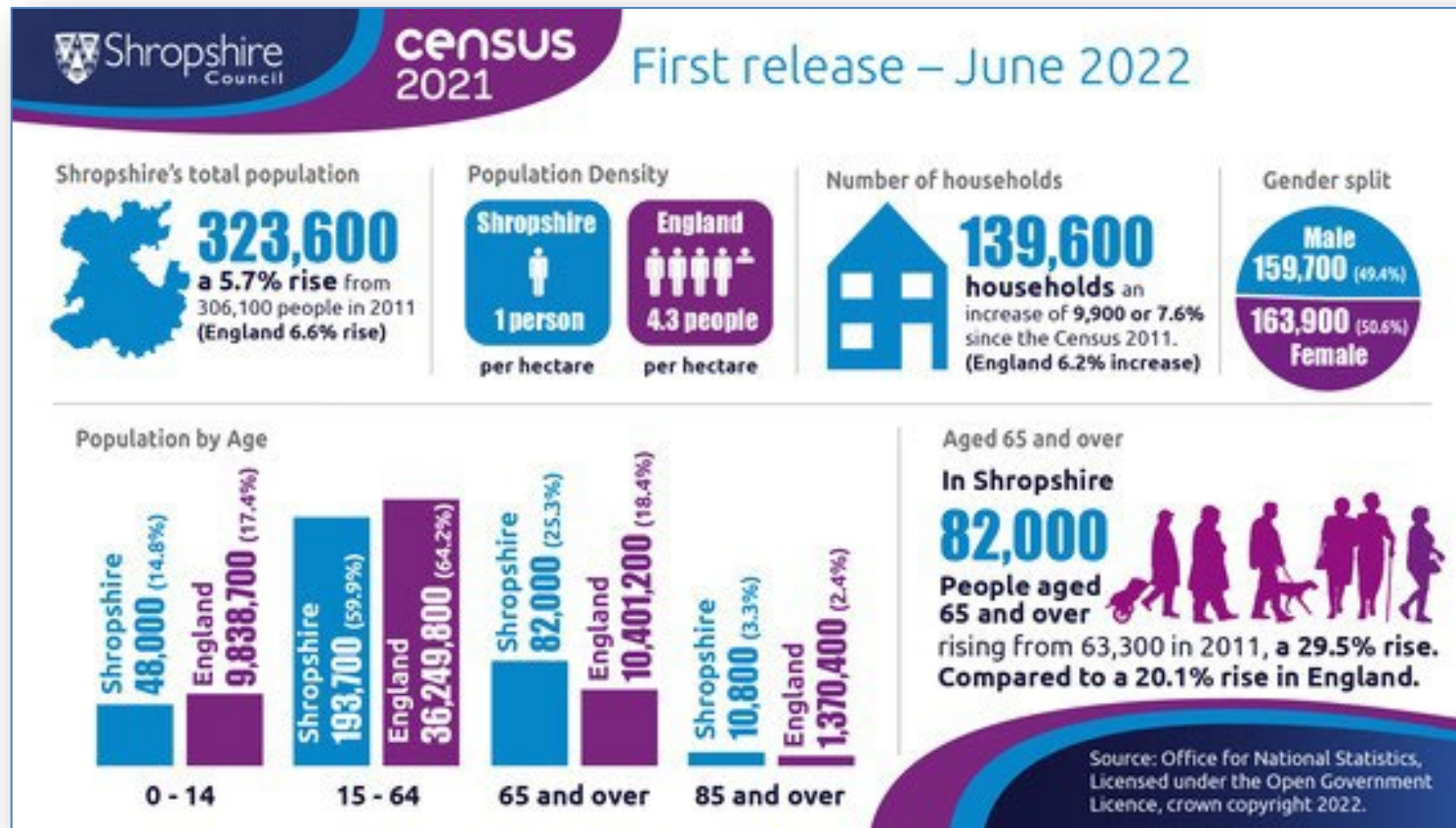
- Publish a strategic plan each financial year
- Publish an annual report
- Conduct Safeguarding Adult Reviews

Each Key Partner organisation retains its own existing lines of accountability and responsibility.

The Business Unit supports the work of the Partnership.

Shropshire

Shropshire is a diverse, large, predominately rural inland county with a wide range of land use, economic activities, employment and social conditions. The population has been increasing at a slightly slower rate than England. Much of the growth has been due to migration. Shropshire has a relatively high concentration of people in the older age groups. The picture below describes the make up of our society.



The Vision for Shropshire

The Shropshire Safeguarding Community Partnership is committed to increasing the safety and resilience of people in Shropshire (including children and adults with care and support needs) and their communities; in order to reduce harm caused by abuse, neglect and other crime.

Our Strategy

Whilst the production of a strategic plan is a statutory requirement, it is also key to supporting our aim to work with Shropshire people and with partners to ensure that children, adults with care and support needs and the community of Shropshire are:

- living as safely as they can
- fully involved in the safeguarding and criminal justice process and the development of any ongoing protection plans if required
- receiving effectively coordinated, excellent services

The following areas are identified as our system priorities and there are four “system” groups (see appendix 1.) set up to oversee the work. They are the:

- Adult Safeguarding and Protection Practice Oversight
- Child Safeguarding and Protection Practice Oversight
- Community Safety Practice Oversight
- Adult and Children’s Statutory Case Review

Success Statements

Each group has worked to identify success statements. This helps each group identify the activities for their Strategic Action Plan (see appendix 2.) in order to tackle the issues the agencies are working to address.

The Adult Safeguarding and Protection Practice Oversight Group's are:

- Increase the number of S42 enquires about self-neglect beyond 3% of total S42 enquires
- We expect at least 75% of Multi-Agency Case File Audits where self-neglect is factor, shows clear evidence of the application of the Working with Self-Neglect Guidance
- Evidencing that the self-neglect guidance is embedded in practice, multi-disciplinary meetings are taking place when required, and action plans are developed for the individual
- Have a strategic use of MACFA process to address areas of adult abuse which require scrutiny and improvement
- Embedding the learning from SARs and DHRs

The Child Safeguarding and Protection Practice Oversight Group's are:

- A reduction in the number of under 5's referred due to significant harm
- Evidence of more prevention activity taking place and more direct work with families
- Ensuring learning is embedded and there is a reduction in repeated points of learning
- Demonstrating evidence that the voice of child has influenced outcomes

The Community Safety Practice Oversight Group's are:

- Establish the datasets including securing partner contributions
- A reduction in serious violence
- A reduction of contacts into COMPASS and First Point of Contact where Anti-Social Behaviour and Crime is a feature
- Interventions to increase the safety of Shropshire Communities e.g IOM
- Increase in positive disposals from West Mercia Police e.g. community resolutions
- A reduction in the number Anti-Social Behaviour Case Reviews
- An increase in the uptake of support through Early Help/Turnaround
- Ensure representation from the Tackling Drug and Alcohol Group, Local Domestic Abuse Partnership Board and Exploitation Group
- Reduce re-offending by at least 5% based on 2022-23 data
- Meeting the mental health needs of offenders at the point of need through the forensic pathway

The Adult Statutory Case Review Group's are:

- To complete Domestic Homicide Reviews within the specified 6 month timescale
- To complete Safeguarding Adult Reviews with 10 months
- To complete action plans with 3 months of the completion of a review
- Learning Briefings to be published within 10 working days of Strategic Governing Group signing off a review
- Dissemination of learning from reviews by agencies to prevent future occurrences

The Children's Statutory Case Review Group's are:

- The Reduction in numbers of Rapid Reviews and Local Child Safeguarding Practice Reviews with repeated themes/learning points
- The Completion of Rapid Reviews within 15 working days
- The Completion of Local Child Safeguarding Practice Reviews within six months
- The Dissemination of learning within agencies and demonstrating evidence of impact via existing Multi Agency Case File Audit process
- Learning briefings to be published within 10 working days of Rapid Reviews and Local Child Safeguarding Practice Reviews being signed off
- Action plans to be complete with 3 months of completion of review
- Raising awareness of adult (welfare and safeguarding) reporting processes for all agencies and teams working with children

There are three strategic priority groups (see appendix 1.) set up to oversee the work. They are identified as joint priorities due to the impact on children, adults with care and support needs and our communities. They are the:

- Local Domestic Abuse Partnership Board
- Tackling Exploitation Group
- Tacking Drug and Alcohol Misuse Group

As with the system groups, each group has worked to identify success statements.

The Local Domestic Abuse Partnership Board's are:

- Referrals to specialist domestic abuse services are reduced due to the wider workforce responding earlier and more appropriately
- Children are educated on safe and healthy relationships across Early Years, Primary, Secondary and Further Education, to include those home educated, in pupil referral units or accessing alternative education settings, to reduce the likelihood of them using abusive behaviour or becoming victims of abuse
- All residential and domiciliary care services for adults and children, are contractually obliged to hold domestic abuse policies and implement them via procedures which include mandatory training as outlined in their policy
- Perpetrators are actively engaged in evidence based work that educates them to stop using abusive and harmful behaviours
- People planning and undertaking S47 and S42 enquiries and anti-social behaviour investigations always consider domestic abuse, whether current or historic, in their decision making
- Our Domestic abuse offer for both victims and perpetrators is accessible to all those that want and need it

The Tackling Exploitation Group's are:

- Increasing the “disruption” of perpetrators of exploitation
- Knowing that partners have a clear understanding of and contribute to plans that reflect the contextual nature of the harm experienced when individuals or groups are being exploited
- Increasing public and parent awareness of exploitation
- Increasing community involvement in tackling exploitation
- Identifying children and adults with care and support needs at risk of exploitation and refer them to the appropriate safeguarding support
- Evaluating the impact of learning activity to demonstrate workforce knowledge and understanding
- Reporting on the different types of exploitation being experienced within the safeguarding and community safety system
- A reduction in exclusions from education, employment and training
- A reduction in children who are Not in Education, Employment or Training
- A reduction in children who are being exploited entering the care system

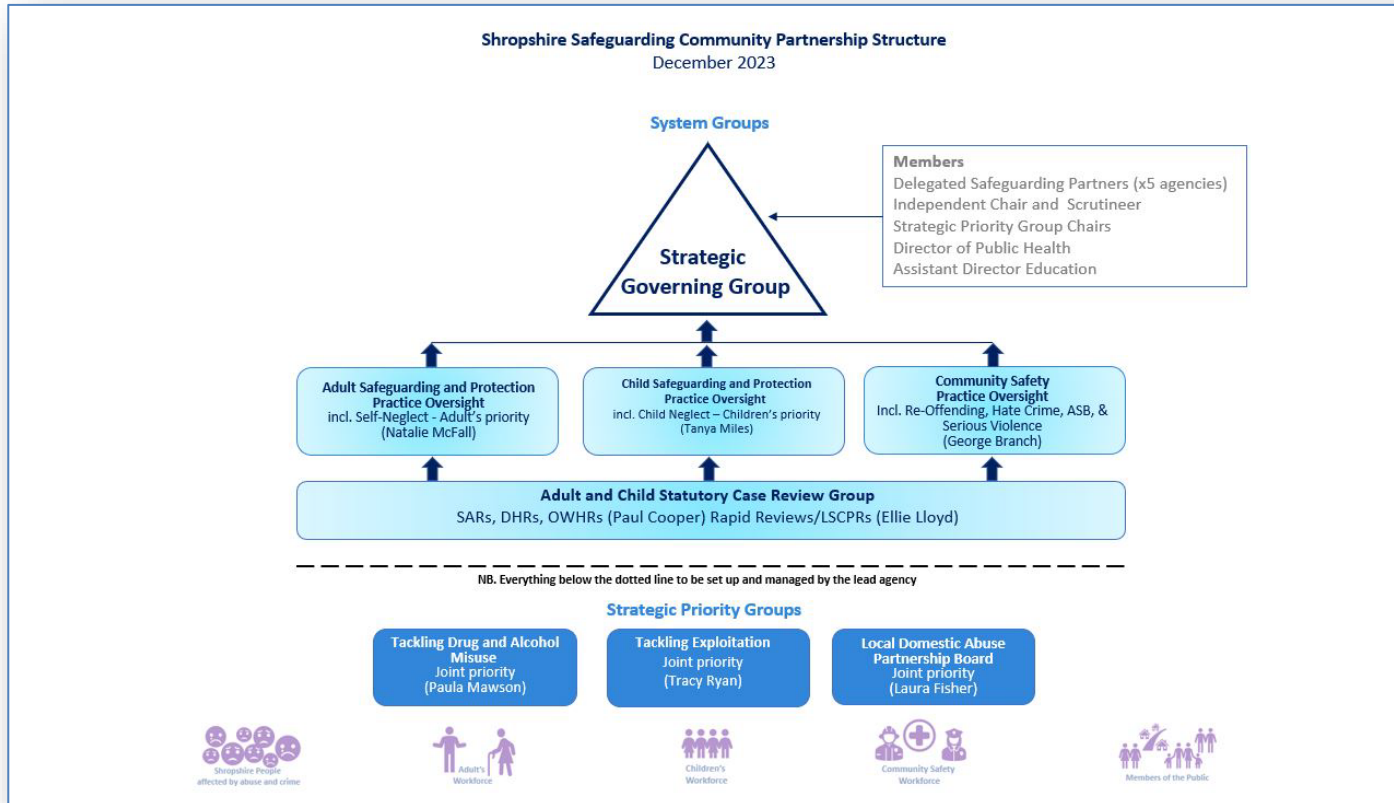
The Tackling Drug and Alcohol Misuse Group's are:

- A reduction in drug use and supply of drugs in Shropshire
- A reduction in drug related crime including reoffending, drug offences and drug related violence
- A reduction in drug related deaths and harm
- Increasing engagement in drug and alcohol treatment
- Improving drug recovery outcomes and long-term recovery
- Preventing demand for drugs by children, young people and young adults to achieve a generational shift
- Embedding lived experience within the design, delivery and evaluation of this work programme

The priorities identified in this document do not instruct organisations who are part of the Shropshire Safeguarding Community Partnership to only respond to these areas of work in their day-to-day activity. Neither does it prevent organisations from undertaking other relevant activity.

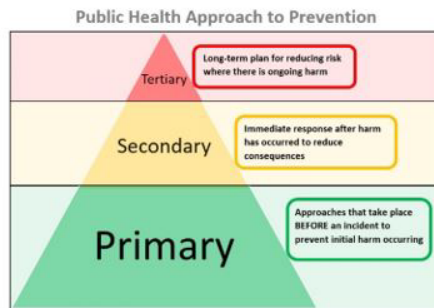
This document outlines the areas of particular interest to the partnership over the next three years that will be monitored through the completion of Strategic Action Plans (by each multi-agency group).

Shropshire Safeguarding Community Partnership Structure





[INSERT GROUP] Strategic Action Plan (2023-2026)



This group will focus on achieving the following statements of success by 2026:

-
-
-
-
-
-
-

We are using a public health model of prevention to ensure most effective preventative action at the earliest possible point. All group members should be able to understand and describe this approach.

Groups should complete at least one multi-agency case file audit per period to be allocated under the relevant heading below.

This is a flexible plan which should be updated by the group with progress at each meeting and formally reviewed annually. Group Chairs should provide an update on the plan's progress with any additional actions identified as part of their Strategic Governing Group report.

What action needs to be taken (specific, achievable, realistic)?	How will you know you've been successful?	Who is responsible for making it happen?	Completion Timescale	Progress with RAG rating and evidence Not Started In Progress Completed
Preventing the problem before it primarily occurs				
Preventing the problem before it primarily occurs – Preventing Crime				
Understanding what is happening in Shropshire (data analysis and problem profile)				
Ensuring the system is able to protect and pursue (include secondary and tertiary prevention activity, resources: processes, services, staff etc)				
Thinking widely about learning, development and improving practice				
Understanding the experience for individuals, their families and communities				